

# An all-in-one school solution.

## DISCOVER THE NEW 14e CHROMEBOOK, EVERY EDUCATOR'S BEST RESOURCE.

Empower your teachers' passions with the all-new 14e Chromebook. This smart, high-tech machine was designed to help your teachers inspire new, creative ways of learning in the classroom. With access to thousands of popular education apps and tools like G Suite for Education, teachers can engage and excite students to share and connect across a variety of subjects. Plus, with the help of Google Classroom, communication and organization in and outside the classroom has never been easier. When you combine all that with the speed, simplicity, security, and versatility of the Chrome Operating System, the 14e Chromebook is the solution your school has been searching for.



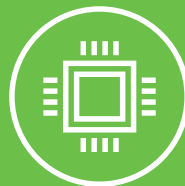
### SIMPLE TO USE, EASY TO MANAGE

Experience an easier way to manage your school's fleet of devices with Chrome Education Software on the 14e. This software makes it easy to monitor the security and location of all your machines in a single school or across the region, all from one central location. Plus, thanks to personalized Google IDs, the setup is simple, and everyone can easily access their data and docs from the cloud, even if the device is shared by more than one faculty member.



### PERFECTLY PORTABLE, RUGGEDLY RELIABLE

Designed to be carried between classes and easily fit into any work bag, the 14e Chromebook weighs a whopping 3.27lbs and is only 17.7mm thick. In addition to its compact design, the 14e boasts rugged reinforcements around ports and hinges for added durability. Plus, the water-resistant keyboard and mechanically anchored, anti-peel keys provide extra protection from common classroom water accidents.



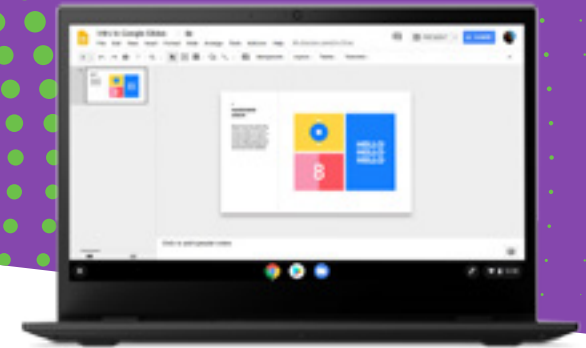
### POWERED TO PERFORM

The 14e Chromebook is always ready and waiting for your fingertips to get to work. Its Cleansheet design is backed by a 2.5 GHz A4 AMD® dual-core processor and up to 10 hours\* of battery life. Add in up to 8GB of RAM and 64GB of storage and you've got device that can masterfully handle any size project with unparalleled speed and sufficient capacity.



\*Based on Google Chrome Power\_LoadTest, a battery run down test. For more information about Google Chrome Power\_LoadTest, visit [www.chromium.org](http://www.chromium.org). Test results should be used only to compare one product with another and are not a guarantee you will experience the same battery life. Battery life may be significantly less than the test results and varies depending on your product's configuration, software, usage, operating conditions, power management settings and other factors. Maximum battery life will decrease with time and use.

## Lenovo 100e Chromebook



Lenovo™

### PERFORMANCE

<b>Processor</b>	2.5 GHz A4 AMD® dual-core processor
<b>Operating System</b>	Chrome OS™
<b>Graphics</b>	AMD® Integrated graphics
<b>Memory</b>	4GB, 8GB DDR4
<b>Storage</b>	32GB or 64GB eMMC
<b>Audio</b>	3.5mm Combo Audio
<b>Battery</b>	57 Whr, Up to 10 hrs*

### DESIGN

<b>Display</b>	14" FHD TN & FHD IPS touch Option
<b>Camera</b>	HD w/2 Mic
<b>Dimensions</b>	328 x 225 x 17.7mm / 12.91" x 8.85" x 0.69"
<b>Weights</b>	1.21kg, 3.27 lbs
<b>MIL-SPEC Standard</b>	Yes
<b>Keyboard</b>	Full-sized, water-resistant (330 ml) with touchpad & mechanically anchored keys. Black-lit option available.

### CONNECTIVITY

<b>Ports &amp; Slots</b>	2 x USB-C, 2 x USB 3.0, WiFi 802.11 AC (2 x 2), Bluetooth 4.2, Micro SD card reader, Combo mic / audio jack, Kensington lock slot
--------------------------	---

### [lenovo.com/chromebook](http://lenovo.com/chromebook)

Lenovo reserves the right to alter product offerings and specifications at any time, without notice. Lenovo makes every effort to ensure accuracy of all information but is not liable or responsible for any editorial, photographic or typographic errors. All images are for illustration purposes only. For full Lenovo product, service and warranty specifications visit [www.lenovo.com](http://www.lenovo.com). Lenovo makes no representations or warranties regarding third party products or services. Trademarks: The following are trademarks or registered trademarks of Lenovo: Lenovo, the Lenovo logo, ideapad, ideacentre, yoga and yoga home. Microsoft, Windows and Vista are registered trademarks of Microsoft Corporation. AMD, the AMD Arrow logo, and combinations thereof are trademarks of Advanced Micro Devices, Inc. in the United States and/or other jurisdictions. Chromebook is a registered trademark of Google Inc. Other company, product and service names may be trademarks or service marks of others. Battery life (and recharge times) will vary based on many factors including system settings and usage. Visit [www.lenovo.com/lenovo/us/en/safecomp/](http://www.lenovo.com/lenovo/us/en/safecomp/) periodically for the latest information on safe and effective computing. ©2019 Lenovo. All rights reserved.

\*Based on Google Chrome Power\_LoadTest, a battery run down test. For more information about Google Chrome Power\_LoadTest, visit [www.chromium.org](http://www.chromium.org). Test results should be used only to compare one product with another and are not a guarantee you will experience the same battery life. Battery life may be significantly less than the test results and varies depending on your product's configuration, software, usage, operating conditions, power management settings and other factors. Maximum battery life will decrease with time and use.

### LENOVO SERVICES

#### Warranty upgrades - onsite and next business day

Onsite Service maximizes PC uptime and productivity by providing convenient, fast repair service at your place.

#### Warranty extensions

This fixed-term, fixed-cost service and Sealed Battery warranty extensions helps you accurately budget for PC expenses, protect your investment, and lower the cost of ownership over time.<sup>1</sup>

#### Accidental damage protection

Protect your investment from operational or structural damage caused by common accidents like drops, spills, or electrical surges. This protection plan helps with predictable budgeting, minimizes unexpected repair costs and provides significant savings relative to the cost of non-covered repairs.<sup>1,2</sup>

- 1 Up to 3 years total duration
- 2 May not be available in all regions

### OPTIONS / ACCESSORIES



**ThinkPad  
USB-C Dock  
40A90090XX**



**Lenovo Wireless  
Mouse Keyboard  
4X30M39xxx**



**Lenovo  
On-Ear-Headphones  
4XDOJ65079**



**Lenovo Performance  
Backpack  
41U5254**