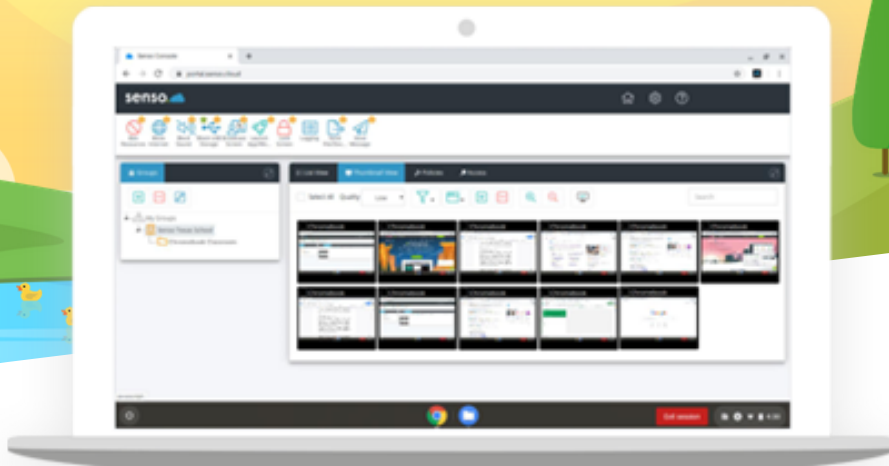


# senso.

## Chrome Essentials Package

 Getech



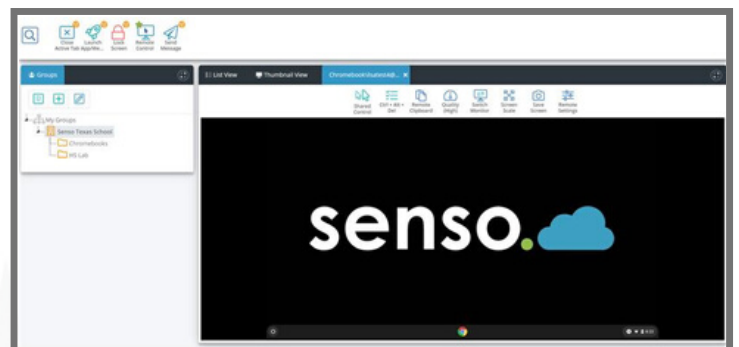
**Chromebooks are a simple, secure, and shareable device that teachers and students can use to create, collaborate and make learning more engaging. They are the fastest growing choice of device for education within the UK.**

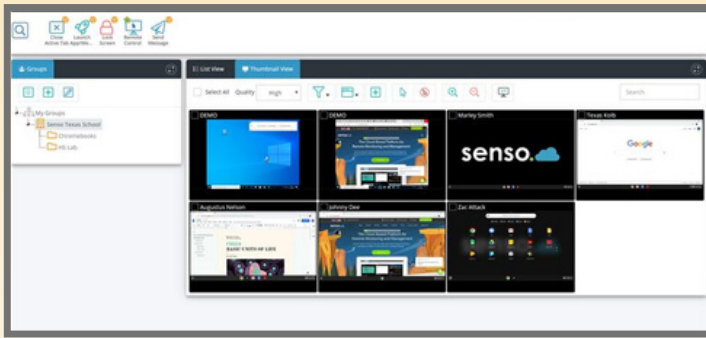
Senso.cloud's Chrome Monitoring solutions have been developed in response to a demand from teachers and administrators to support the embrace of distance learning, ensuring students using these devices are kept safe, engaged and focused, wherever they are connecting from.



### ***GOOGLE CLASSROOM SYNC***

Build your classes in the Chrome Management Console, Senso will pull that information to auto populate your class groups within the portal so you can quickly monitor your students and keep them on track.





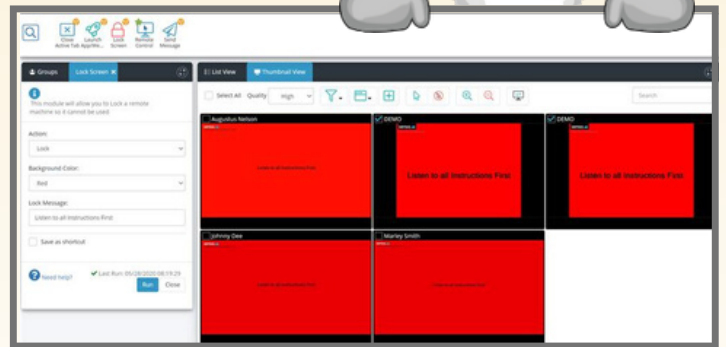
## ***LIVE THUMBNAIL VIEW***

See exactly what students in your class are working on, in real time.



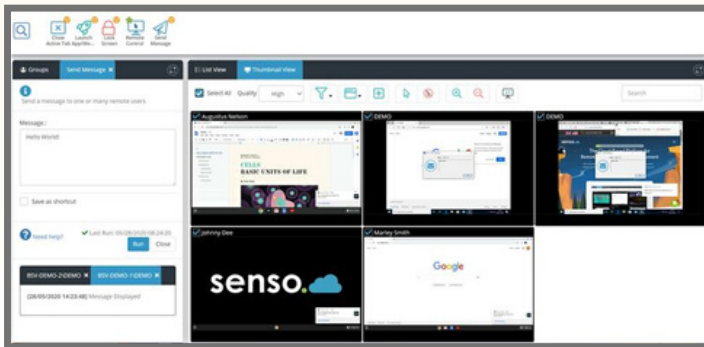
## ***LOCK SCREEN***

Focus the class and direct eyes back to the front by locking Chromebook screens.



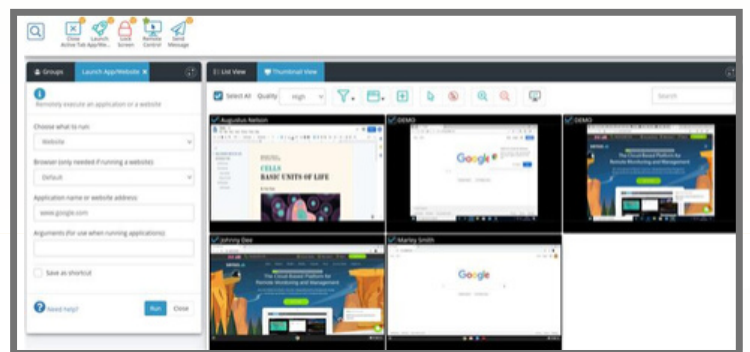
## ***SEND MESSAGE***

Send a message to one or many remote users.



## ***LAUNCH WEBSITES***

Remotely launch websites.



## ***CLOSE ACTIVE TAB***

Closes the currently active tab in Chrome.

